

OCT 2024

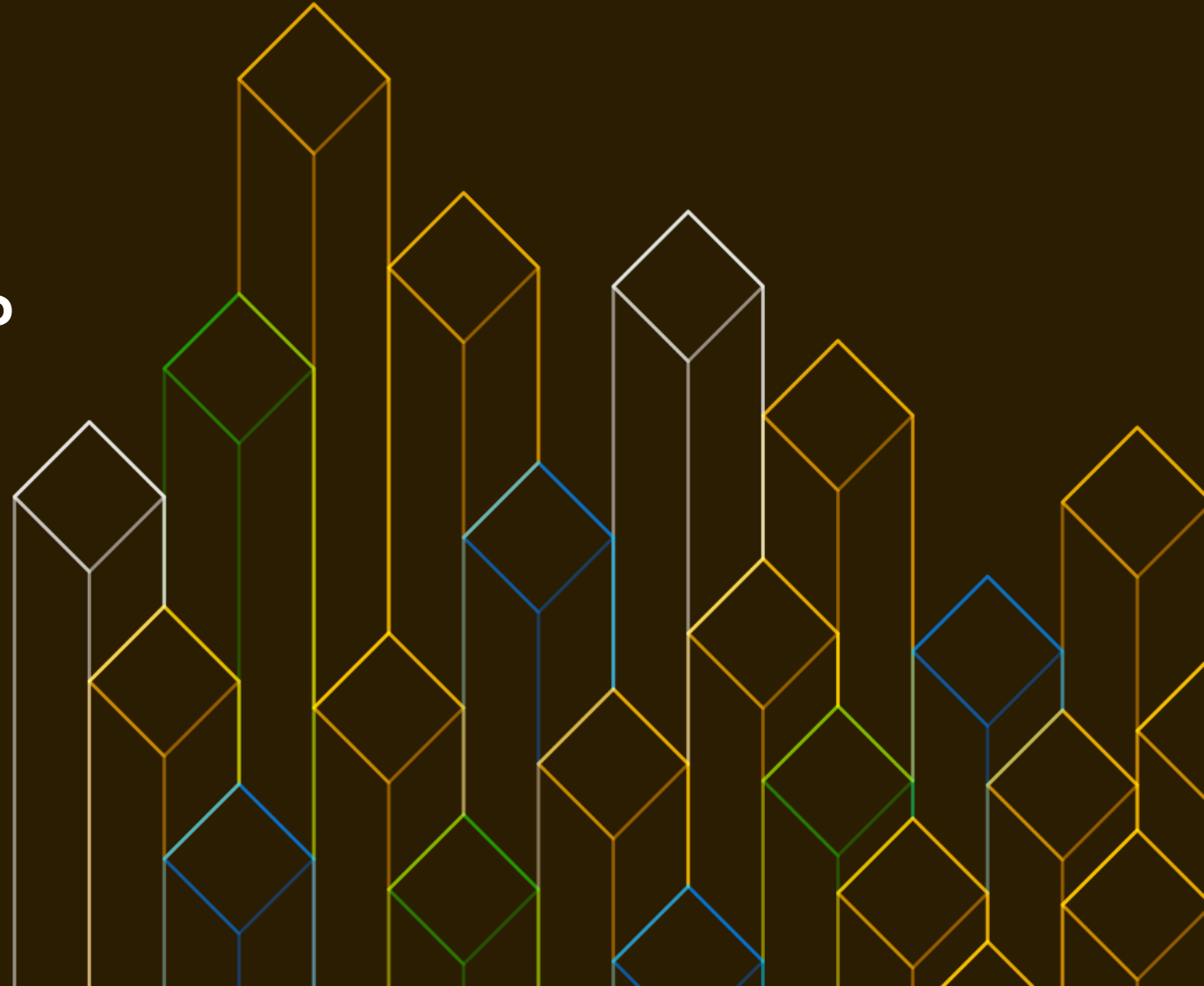


What's new in Leap 16.0?

Douglas DeMaio

openSUSE Manager

(Slides by Luboš Kocman Leap and
Leap Micro Release Manager)



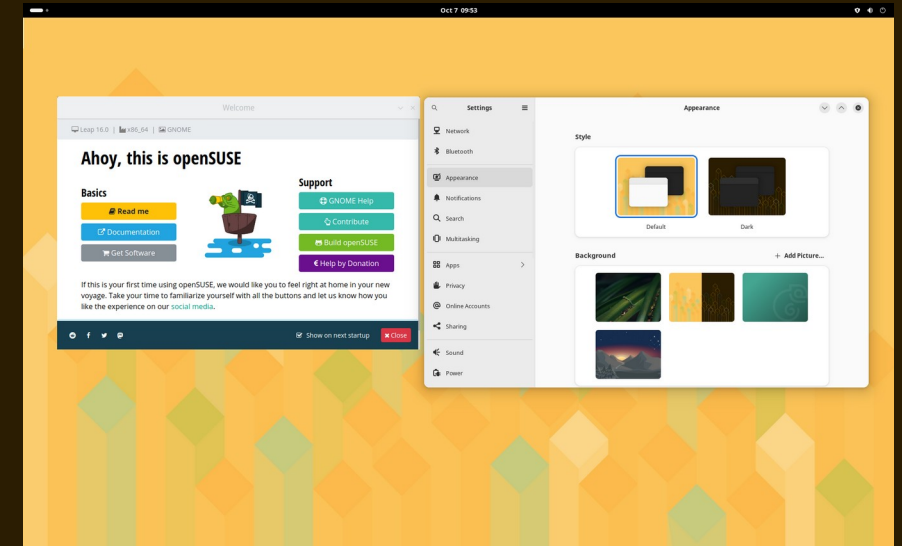
What is Leap?



Traditional Linux distribution with desktop, based on the latest release of SUSE Linux Enterprise.

Leap is released every 12 months with an extra 6 months of overlap support. With its **90 months** of total support, Leap 15 is one of the longest supported community distros. Debian stable and Ubuntu LTS offer 60 months each.

Ideal for those who prefer traditional non-rolling distribution with a longer term support.

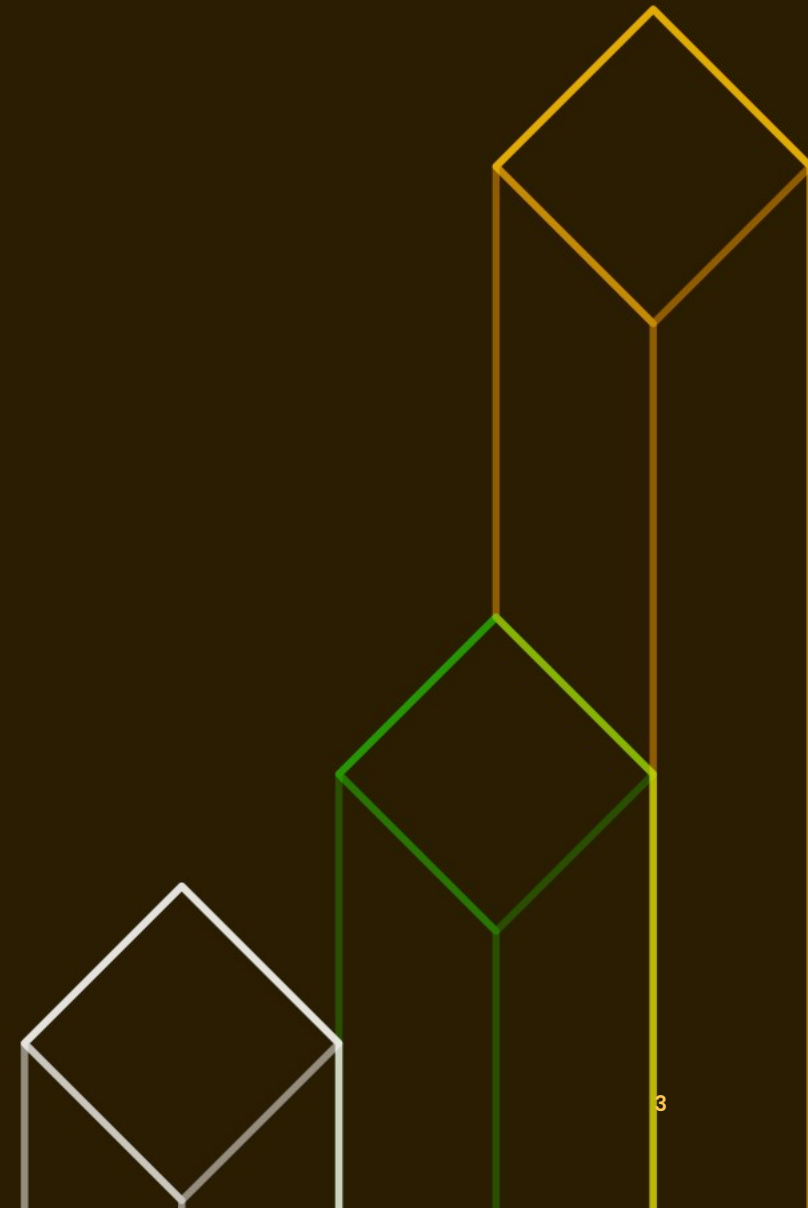


Why is Leap 16.0 so important?

Tumbleweed respective openSUSE Factory is where all the development happens.

However, new major release is always an opportunity to revisit what we currently offer to users on a larger scale, make some decisions, and fast-forward some of the changes, which would otherwise take much longer.

Let's have a look at some of these changes.

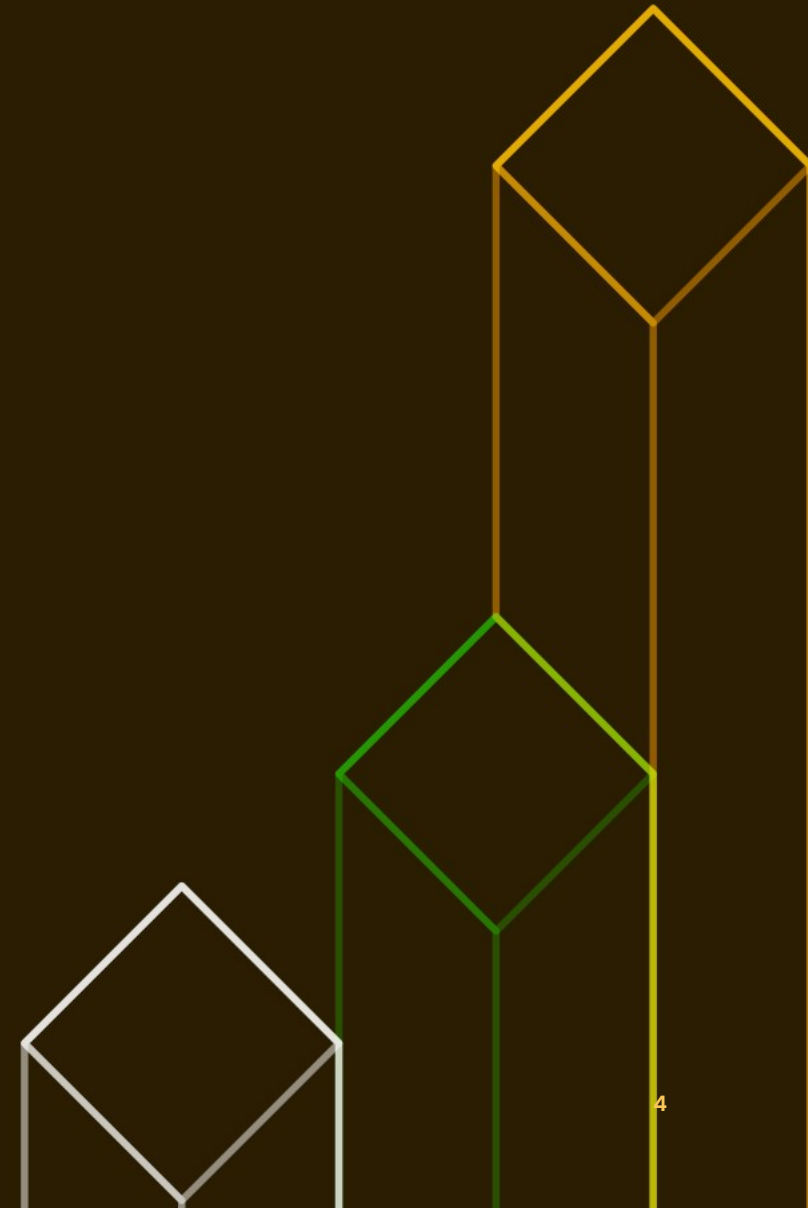


New codebase

Leap 15 is available for total of 90 months. Aside from keeping sysadmins very happy, this comes with unwanted heritage in form of outdated libraries that nobody really uses nowadays.

The best cleanup is a clean fork from Factory. Of course we do have to work with maintainers not to blindly copy all, we want to avoid including legacy packages.

Leap 16 will be based on SUSE Linux Framework One (previously ALP) is a source pool for both Micro 6.X and SLES 16.X, relatively freshly forked from Factory.



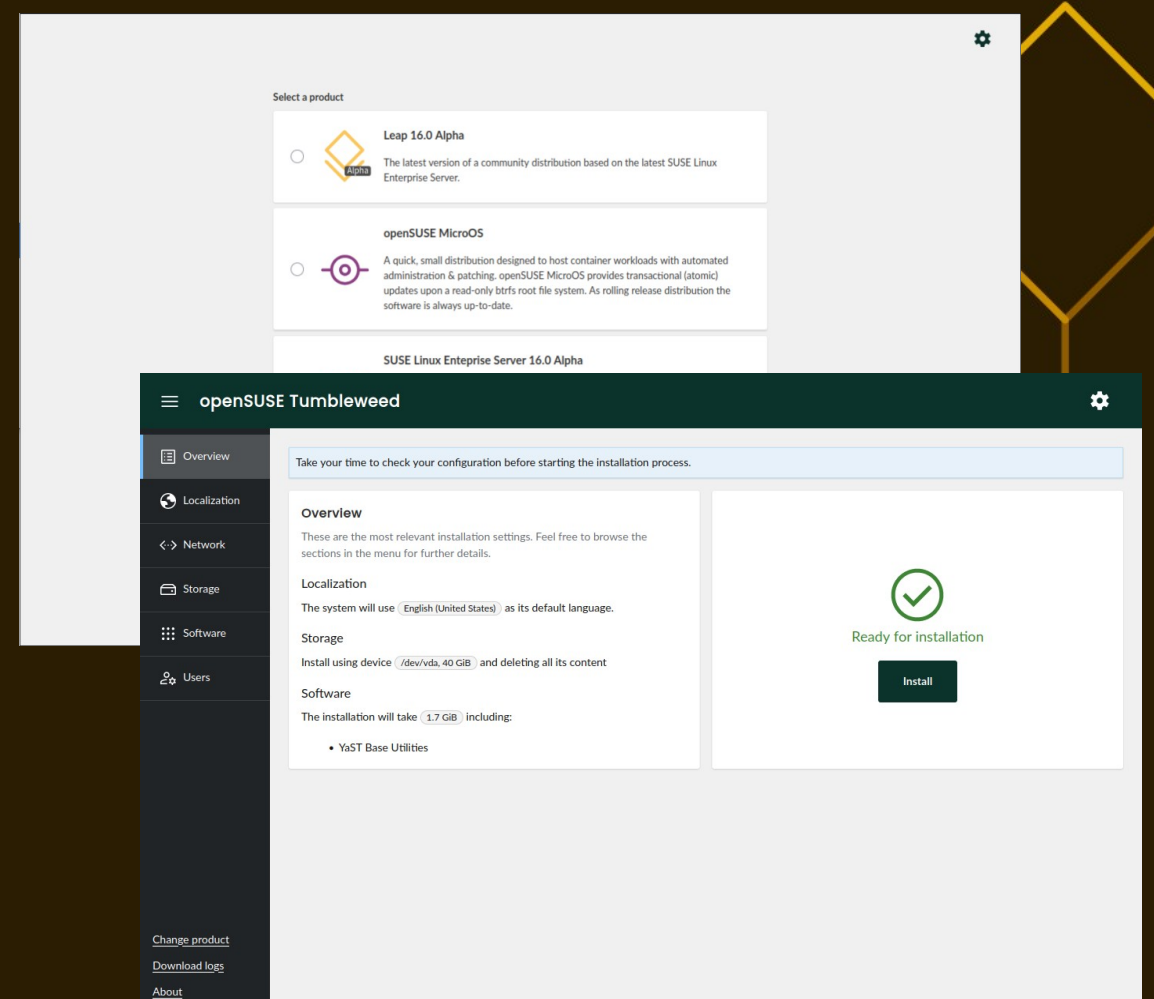
New Installer

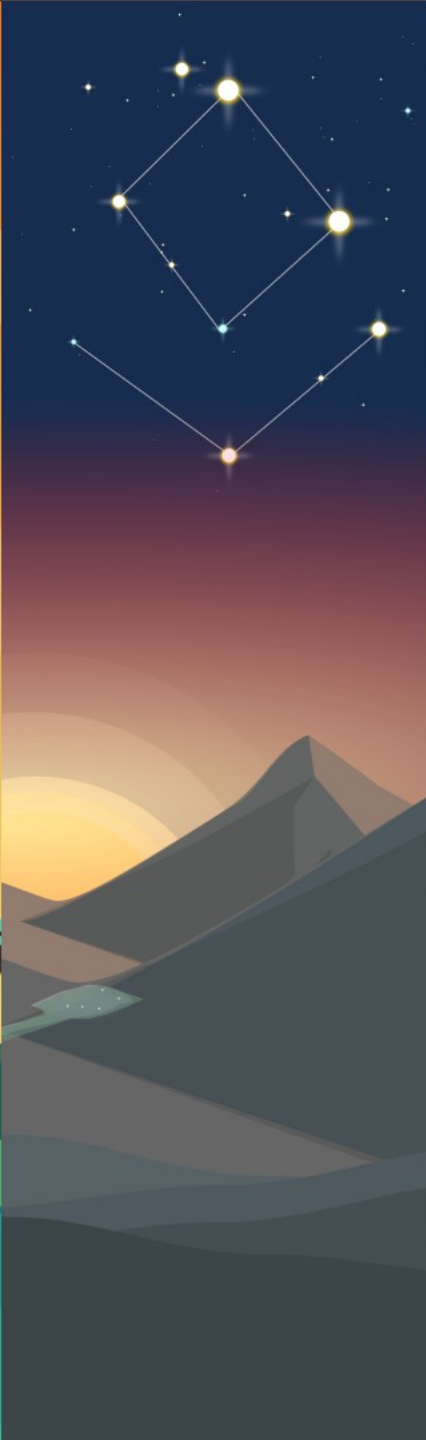
The preferred way to install Leap 16.0 is with the new **Agama** installer.

AutoYaST compatibility

Install image for Leap 16.0 pre-Alpha is available at get.opensuse.org

We will plan to offer alternative images such as self-install image + combustion that you know from Micro, livecds and other specialized images.



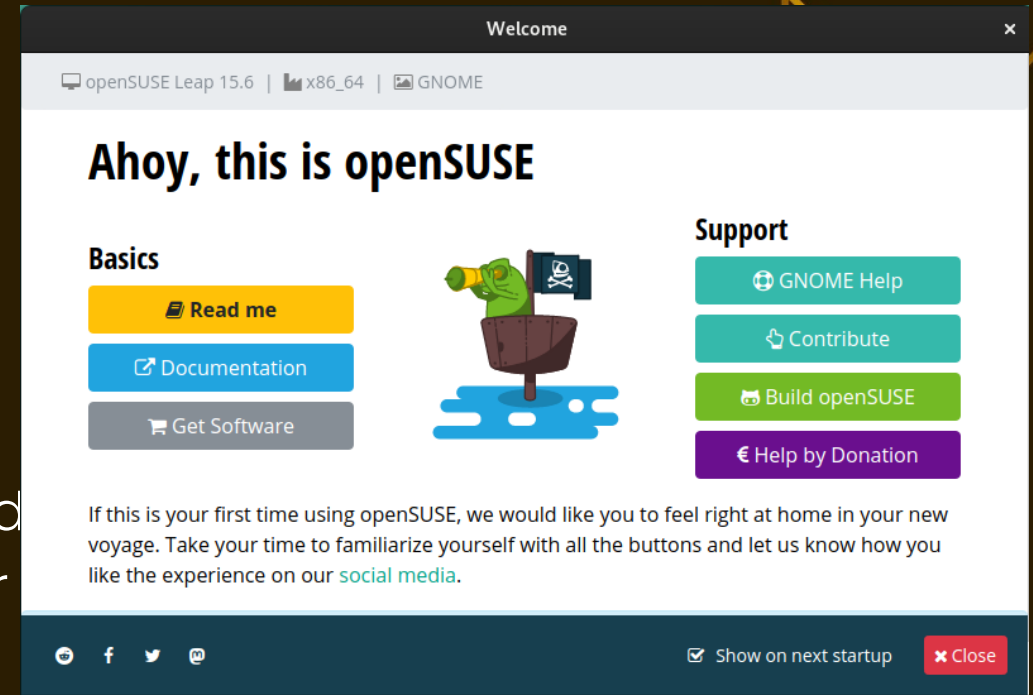


New welcome (WIP)

As part of the entire rebranding effort I'd like to greet users with a revisited welcome screen.

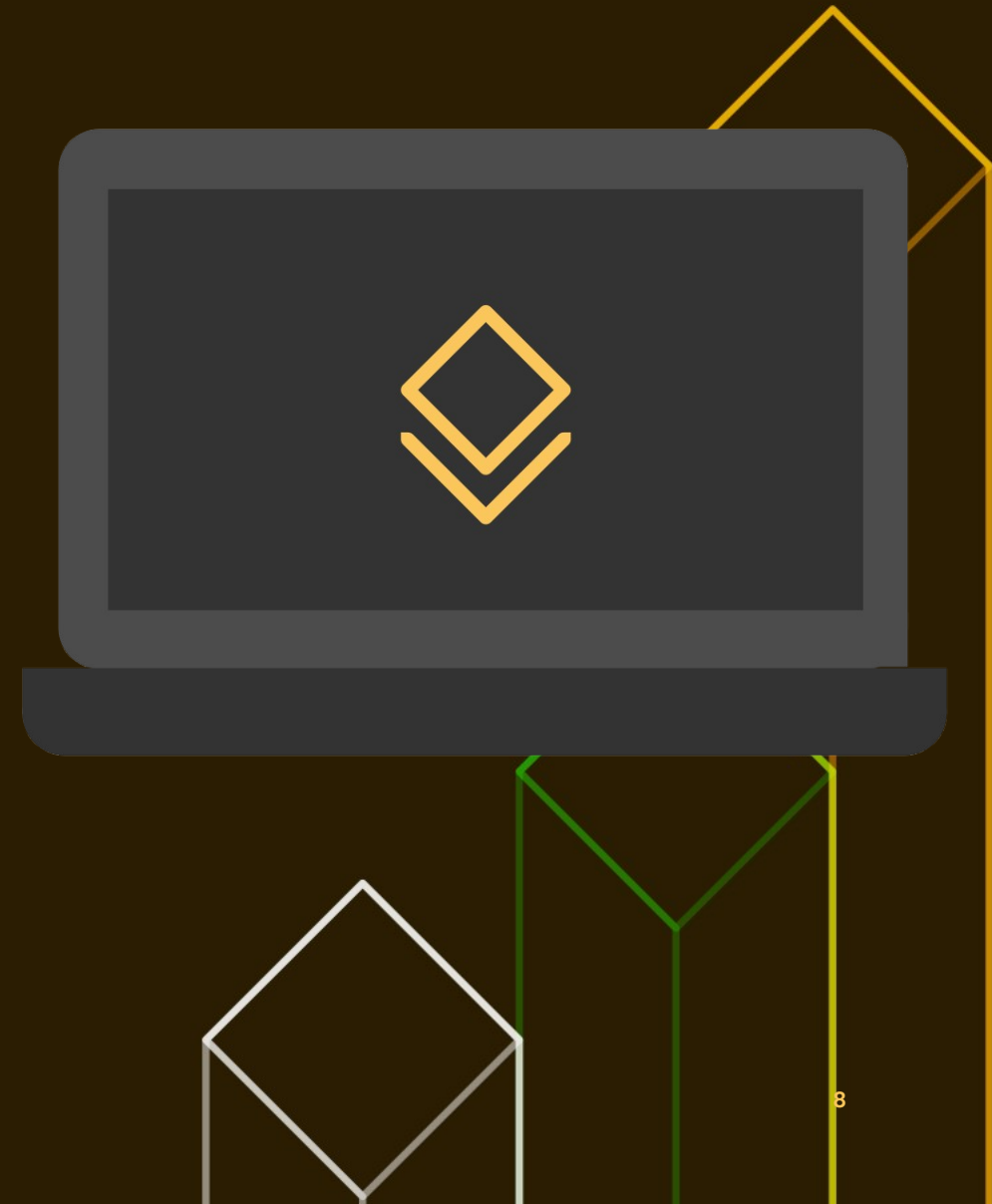
Hackweek 24 effort on Nov 18–24 made some advancements

The current direction seems to be steering toward customizing and rebranding existing gnome-tour and plasma-welcome apps.



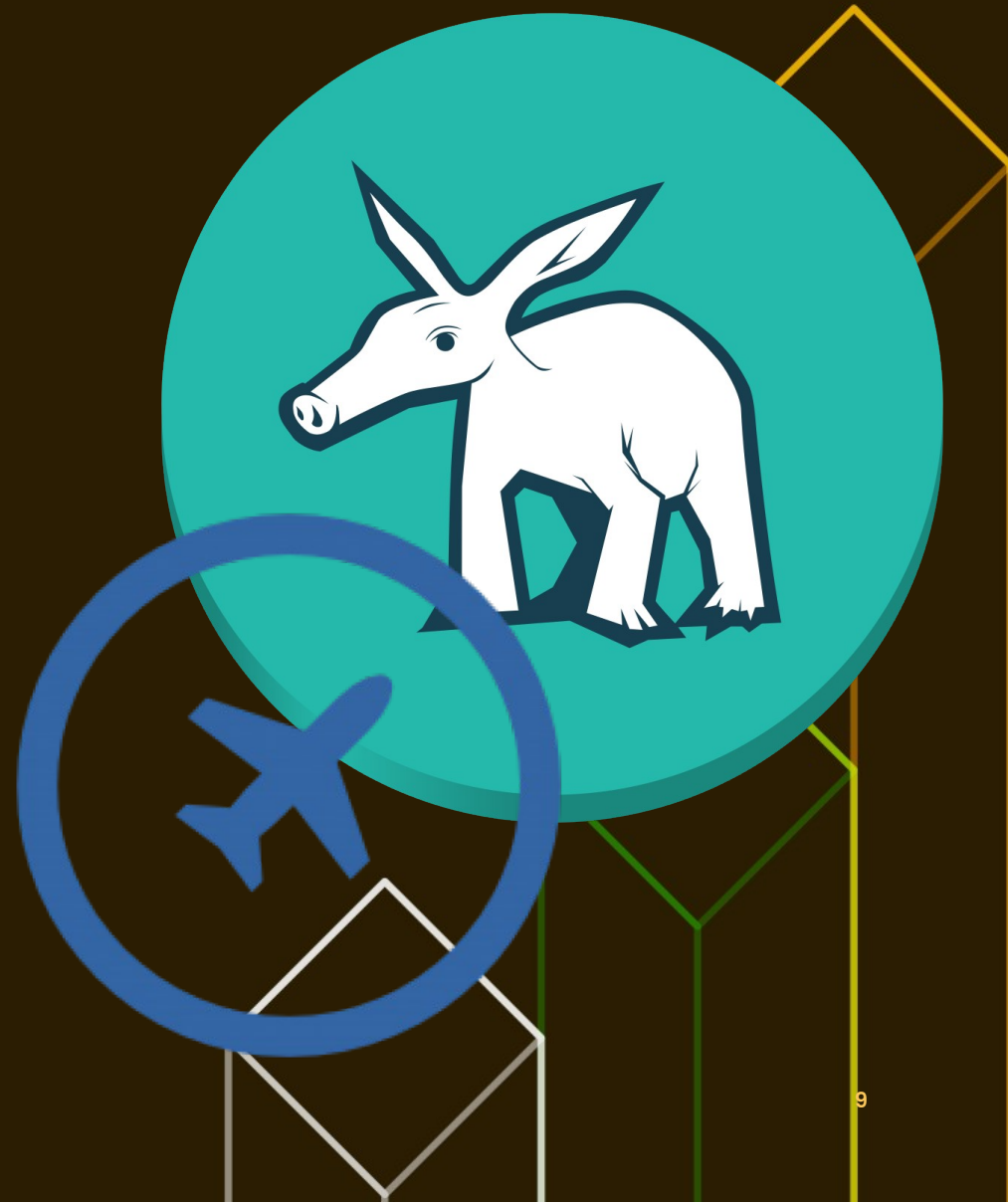
Revisited desktop

- The latest available GNOME in Tumbleweed around Public Beta code submission deadline in May 2025 should be version 48.1. There is a chance that we'd have a bit more flexibility here than in Leap 15.X.
- Leap should generally prefer LTS versions. Leap 15.6 had plasma 5.27.X LTS. IF there is Plasma 6 LTS, then we'd like to use it. We're currently exploring whether to go with 6.8/6.9 give the deadlines



System management

- SLES, similar to *Micro plans to go the cockpit way, Leap will have both cockpit and YaST.
- Most of the new user reviews start by mentioning how helpful YaST is and we'd like to keep such experience.
- A nice change on this front is that just like Micro we will finally support cockpit-selinux as Leap 16.0 will have selinux policy unlike Leap 15.X which was AppArmor centric due to lack of selinux policy.
- Leap 16.0 will have both SELinux and AppArmor



New repository management

- openSUSE-repos utilize zypp's Repository Index Service and generate .repo files from a xml template which is under rpm control.
- zypper performance improvements
- openSUSE-repos use Fastly CDN by default
- Helps with repo changes during the upgrade as repo change is deployed as a package update
- Optional in 15.6, default in Leap Micro 6.0+ and I made it the **default** in newly installed 16.0 too.



Leap Roadmap

Leap 16.0 preAlpha is already available at get.opensuse.org

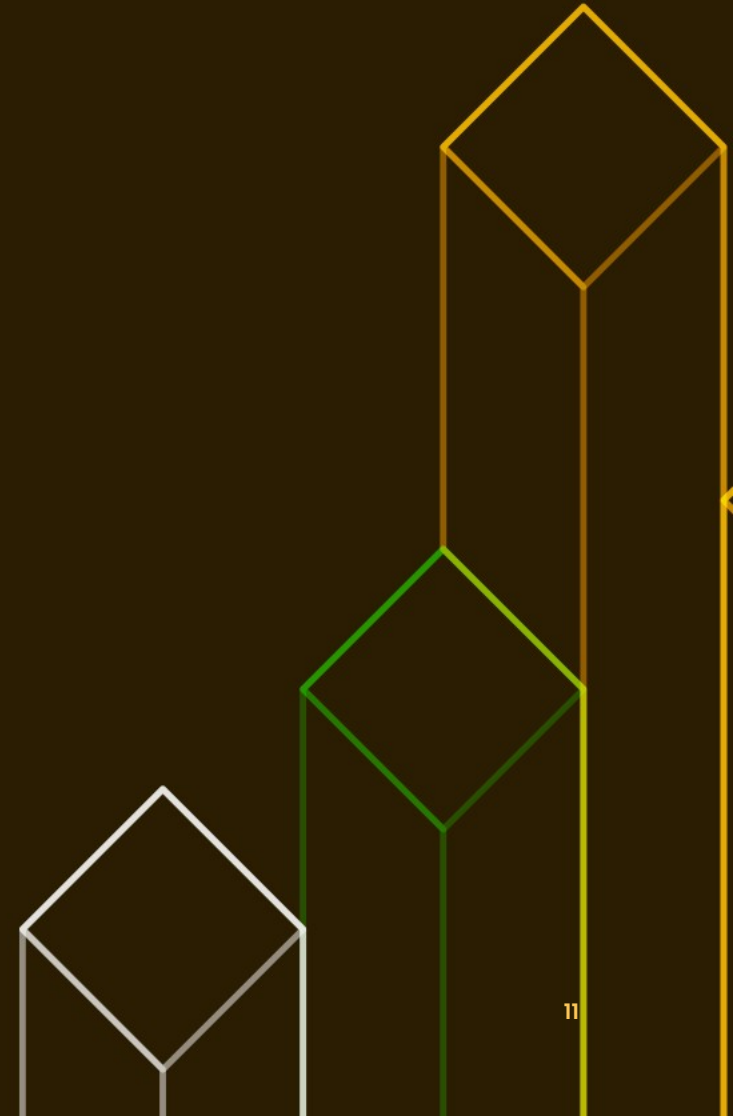
Leap 16.0 Beta April/May 2025

Leap 16.0 GA in Oct/Nov 2025

Leap 15.6 support will be extended to provide sufficient overlap with 16.0.

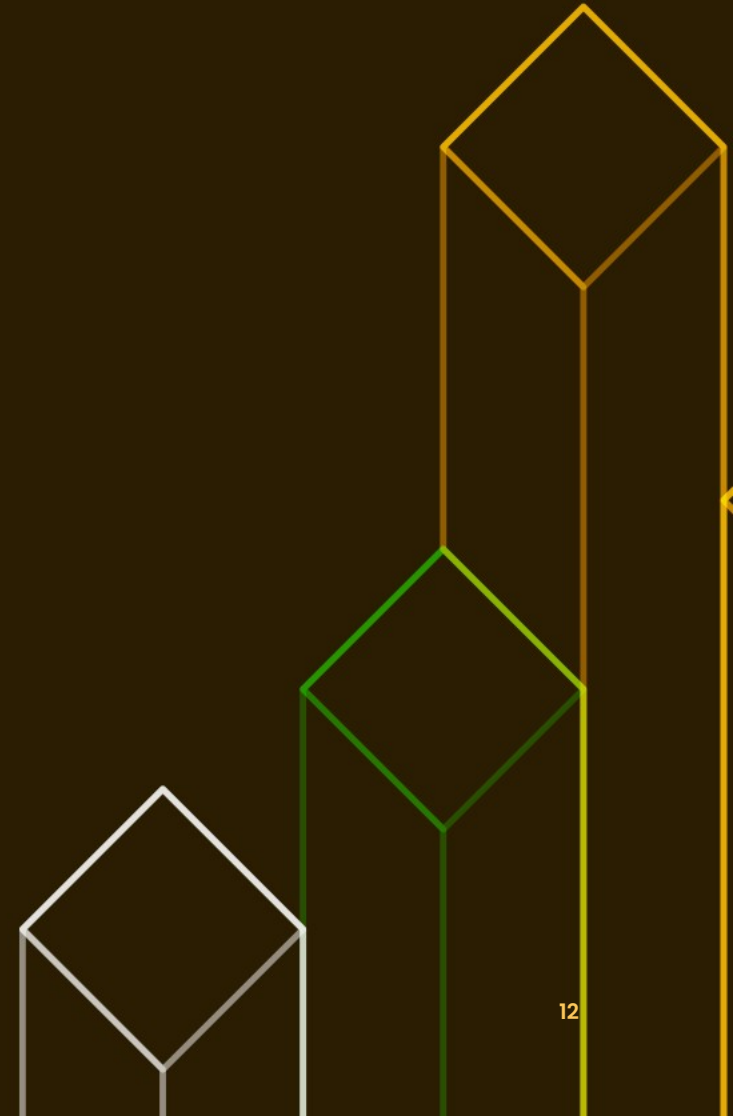
6 months is our standard overlap

No Leap 15.7!



A lot of new stuff, but key values remain the same

- Traditional distribution with desktop based on the latest SLES. Binary identical kernel and core with SLES 16 mixed with fresh community packages from Tumbleweed.
- Upgradeable from previous versions, each Leap 16.X release has support for 18 months.
- Single click migration to SLES.
- Built and tested in public.



Thank you!

